

**CeraZorb TBU** is a 5mm thick underlayment system that has been specially designed for setting tile and stone flooring. CeraZorb TBU offers excellent insulation properties along with the ability to be used in place of regular tile backer board. CeraZorb TBU offers high impact and low weight and will remain unchanged after repeated impact loads. CeraZorb TBU is lightweight at only .07 lb per sq ft and will not rot, support mold or mildew, or absorb moisture, very stable—heat and cold resistant. CeraZorb TBU has a 1.5 R value, offers crack isolation of to 1/4" and achieves a 20 decibel improvement ( $\Delta$  20 per ASTM 2179-3).

**CeraZorb TBU Technical Data**

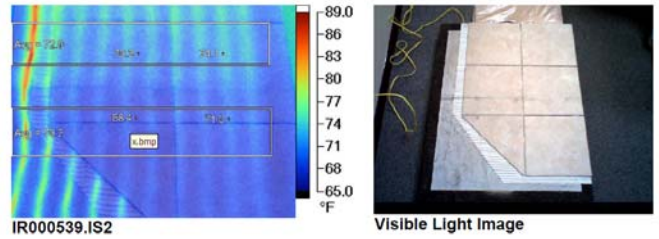
Size: 2ft x 4ft
Thickness: 5mm—3/16"
Qty per Box: 30 Sheets—240 sq ft box
R Value: 1.5
TCNA Robinson Test: Light Commercial Rating
Weight: 0.56 lbs per sheet—19 lbs per box
Acoustic: 6" concrete slab $\Delta$ IIC 20 / Wood Frame Construction IIC 53 / Field FIIC 59—7" concrete

CeraZorb TBU can also be used with **Edge Strip Kits**. Edge Strip Kits are a new innovative product designed to make installing floor heating systems faster and easier. Edge Strip Kits provide a guide, around the perimeter of the room, for the self-leveling compound to fill in and over the heat mat or cable. ESK decreasing the chance of damaging the heat wire while troweling thinnest during tiling. More Information is available online at [www.EdgeStripKits.com](http://www.EdgeStripKits.com)

**EDGE STRIP KITS**

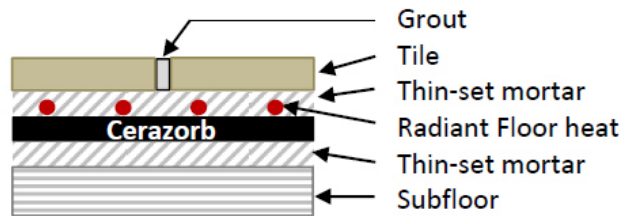


# Thermal Break Underlayment for use under Radiant Floor Heat



CeraZorb TBU- Thermal Break Underlayment reduces temperature below heating mat by 3 degrees and increase temperature above the heating mat by 4-6 degrees, thereby reducing your electric bill and increasing the efficiency of the heating system.

## Under Tile, Stone or Marble



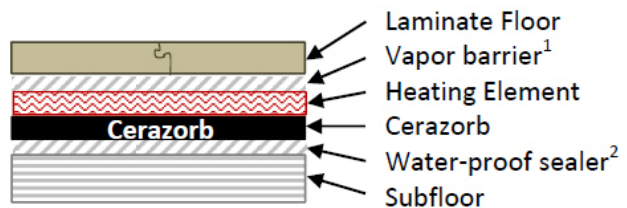
### Installation of Tile, Stone or Marble

Follow applicable ANSI A.108/A.118/A.136 for proper installation of ceramic tile. Always use a polymer modified mortar meeting ANSI A118.4 or 118.11. Install heating element over CeraZorb.

**Skim coat method:** Key in a skim coat over the heating element & onto CeraZorb as the first step. Thin-set tile in a second step using the appropriate notched trowel.

**Self-leveling cement (SLC) method:** Lay heating element over CeraZorb. Brush SLC primer over heating element and onto CeraZorb. Apply SLC. Thin-set tile in a second step using the appropriate notched trowel.

## Under Floating Laminate or Wood



- 1 Top vapor barrier required for film heating systems only.
- 2 A water-proof sealer or vapor barrier is required below CeraZorb on slab subfloors where the calcium chloride test exceeds 3 lbs. per 1,000 SF in 24 hours.

Install (float) flooring layers as shown above. Duct tape CeraZorb seams together. After the first row is complete, install the second row with staggered seams to the first row.